



FRAMELESS MINIMAL
 MODERN BEAUTY
 FOR TODAY'S URBAN LIVING



THE
NORFOLK
 COMPANIES

Since 1934

Norfolk Hardware® Home Center **Norfolk Kitchen & Bath** **Northeast Cabinet® Countertop Dist.**

studio
 full
 access®
 CABINET SERIES

by
ADVANTA
 CABINETS

studio full access®

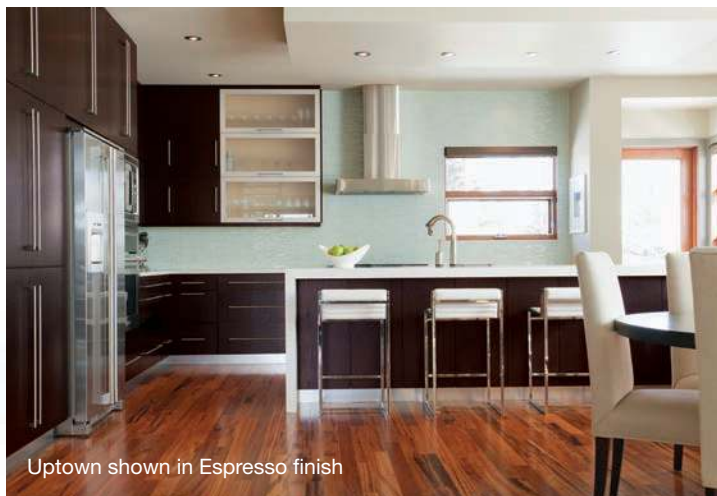
LIVING IN CITIES IS AN ART, AND WE DELIVER THE DESIGN AND STYLE TO COMPLEMENT YOUR URBAN LIVING.

STUDIO FULL ACCESS cabinets are the true model of modern design's unadorned elegance. No wonder this sleek, flexible look has become a staple in contemporary homes.

Whether you are looking for the simple refinement of white, the traditional feel of authentic looking wood grain patterns, or a more modern feel that captures the current trend of neutral finishes, our Studio Full Access series has the finish that meets your design needs.



Uptown shown in Winter Bark finish



Uptown shown in Espresso finish



Avalon shown in Starlight White Gloss finish

FRONT COVER: Uptown shown in Bone finish Room scene photos: Reston Station by Comstock Partners and Suburban Kitchens.



PAINTED MDF DOOR STYLES

Choose from two Slab and Shaker door styles in six on-trend enamel paint finishes to create a look of clean, sleek, modern elegance.

WEST END

Combine the sleek aesthetic of slab frameless cabinetry with the traditional beauty of paint with our West End painted MDF door style.

SPECIFICATIONS

- 3/4" thick painted MDF slab doors and drawer fronts
- Available in 6 enamel paint finishes; doors are painted front and back
- Square design for all cabinets; offered with slab drawer fronts
- Decorative hardware is required

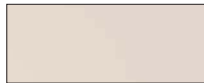
Available in **PREMIUM FINISH GROUP 3:**



Alpine White



Linen



Latte



River Rock



Slate



Baltic



WEST END
shown in Baltic

GEORGETOWN

Master transitional kitchen designs with our Georgetown painted MDF door style.

SPECIFICATIONS

- 3/4" thick painted MDF shaker doors with slab drawer fronts
- Available in 6 enamel paint finishes; doors are painted front and back
- Square design for all cabinets; offered with slab drawer fronts
- Decorative hardware is required

Available in **PREMIUM FINISH GROUP 3:**



Alpine White



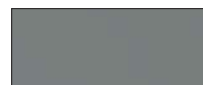
Linen



Latte



River Rock



Slate



Baltic



GEORGETOWN
shown in Latte

THERMOFUSED LAMINATE (TFL) DOOR STYLES

With easy-to-maintain slab door styles and 15 finish options to choose from, you can create the perfect contemporary kitchen design for your next project.

MADISON

Capture the look and feel of real wood cabinets with our Madison thermofused laminate door style.

SPECIFICATIONS

- 5/8" thick melamine slab doors and drawer fronts
- Textured melamine laminate is thermally fused to CARB2-compliant composite panel core
- Finish pattern runs vertically for both doors, drawer fronts, and end panels
- Edgebanded on all four sides
- Square design for all cabinets; offered with slab drawer fronts
- Decorative hardware is required

Available in **FINISH GROUP 1**:



Carrara



Ash



Graphite



Kona*

*Kona available 6/4/2018



MADISON

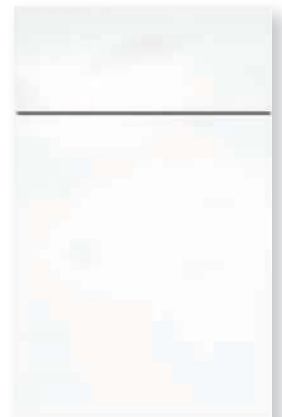
shown in Graphite

BROADWAY

Design modern kitchens and baths with our Broadway high-gloss thermofused laminate door style.

SPECIFICATIONS

- 5/8" thick MDF core high-gloss slab door and drawer front
- High-gloss melamine laminate is thermally fused to CARB2 compliant composite panel core
- Available in **PREMIUM FINISH GROUP 4** Luster only
- Edgebanded on all four sides
- Square design for all cabinets; offered with slab drawer fronts
- Decorative hardware is required



BROADWAY

available in Luster only

Please refer to Studio Full Access price book for information on prices by **FINISH GROUP**.



UPTOWN

Design simple, clean elegance in your kitchens and baths with our Uptown thermofused laminate door style.

SPECIFICATIONS

- 5/8" thick melamine slab doors and drawer fronts
- Melamine laminate is thermally fused to CARB2-compliant composite panel core
- Finish pattern runs vertically for both doors, drawer fronts, and end panels
- Edgebanded on all four sides
- Square design for all cabinets; offered with slab drawer fronts
- Decorative hardware is required



UPTOWN
shown in Seaside

Available in **FINISH GROUP 1**:



Bone*



Moonlight



Champagne



Seaside



Steel



Nickel*



Sunset



Brownstone



Winter Bark



Espresso

*Bone and Nickel offered in a Crystalite finish.

CROSSTOWN

Re-create the contemporary look and feel of European cabinetry with our Crosstown thermofused laminate door style.

SPECIFICATIONS

- 5/8" thick melamine slab doors and drawer fronts
- Melamine laminate is thermally fused to CARB2-compliant composite panel core
- Finish pattern runs horizontally for door and drawer fronts only, end panel finish pattern runs vertically
- Edgebanded on all four sides
- Square design for all cabinets; offered with slab drawer fronts
- Decorative hardware is required
- Not available in cabinets with doors taller than 48". See *Studio Full Access Specifications Book* for details.



CROSSTOWN
shown in Winter Bark

Available in:

PREMIUM FINISH GROUP 3



Moonlight



Champagne



Seaside



Steel



Sunset



Brownstone



Winter Bark



Espresso

RIGID THERMOFOIL (RTF) DOOR STYLES

Slab and shaker door styles in 16 on-trend finishes give you the flexibility to design the ideal modern kitchens and baths for today's urban living.

COLUMBIA

Create kitchens and baths with European flair with our Columbia thermofoil door style.

SPECIFICATIONS

- 3/4" thick RTF slab doors and drawer fronts
- Rigid thermofoil laminate fused to CARB2-compliant MDF core
- Finish pattern runs horizontally for door and drawer fronts only, end panel finish pattern runs vertically
- Square design for all cabinets; offered with slab drawer fronts
- Decorative hardware is required
- Not available in cabinets with doors taller than 48". See *Studio Full Access Specifications Book* for details.



COLUMBIA
shown in Baroque

CONCORD

Achieve modern beauty with a touch of traditional styling with our Concord thermofoil door style.

SPECIFICATIONS

- 3/4" thick RTF shaker doors and drawer fronts
- Rigid thermofoil laminate fused to CARB2-compliant MDF core
- Backside of doors and drawer fronts are white melamine, regardless of finish ordered
- Finish pattern runs horizontally for door and drawer fronts only, end panel finish pattern runs vertically
- Square design for all cabinets; offered with slab drawer fronts
- Decorative hardware is required
- Not available in cabinets with doors taller than 48". See *Studio Full Access Specifications Book* for details.



CONCORD
shown in Aged Oak Gray

COLUMBIA and CONCORD are available in:

PREMIUM FINISH GROUP 2



Soprano



Finesse



Seria



Baroque



Verismo



Tannery Maple

PREMIUM FINISH GROUP 3



Diva



Aged Oak Gray



Southwester



Mackinac

Please refer to Studio Full Access price book for information on prices by **FINISH GROUP**.



AVALON

Discover the beauty of simplicity in design with our Avalon thermofoil door style.

SPECIFICATIONS

- 3/4" thick RTF slab doors and drawer fronts
- Rigid thermofoil laminate fused to CARB2-compliant MDF core
- Backside of doors and drawer fronts are white melamine, regardless of finish ordered
- Square design for all cabinets; offered with slab drawer fronts
- Decorative hardware is required



AVALON
shown in Soprano

GALLERY

Add a contemporary edge to the timeless shaker style with our Gallery thermofoil door style.

SPECIFICATIONS

- 3/4" thick RTF shaker doors and drawer fronts
- Rigid thermofoil laminate fused to CARB2-compliant MDF core
- Backside of doors and drawer fronts are white melamine, regardless of finish ordered
- Square design for all cabinets; offered with slab drawer fronts
- Decorative hardware is required



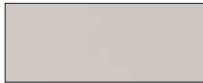
GALLERY
shown in Fresh Grey Gloss

AVALON and GALLERY are available in:

FINISH GROUP 1



Exotic White



Fashion Grey



Matte Steele



Matte Black

PREMIUM FINISH GROUP 2



Soprano



Finesse



Seria



Baroque



Verismo



Tannery Maple

PREMIUM FINISH GROUP 3



Diva



Aged Oak Gray



Southwester



Mackinac

PREMIUM FINISH GROUP 4



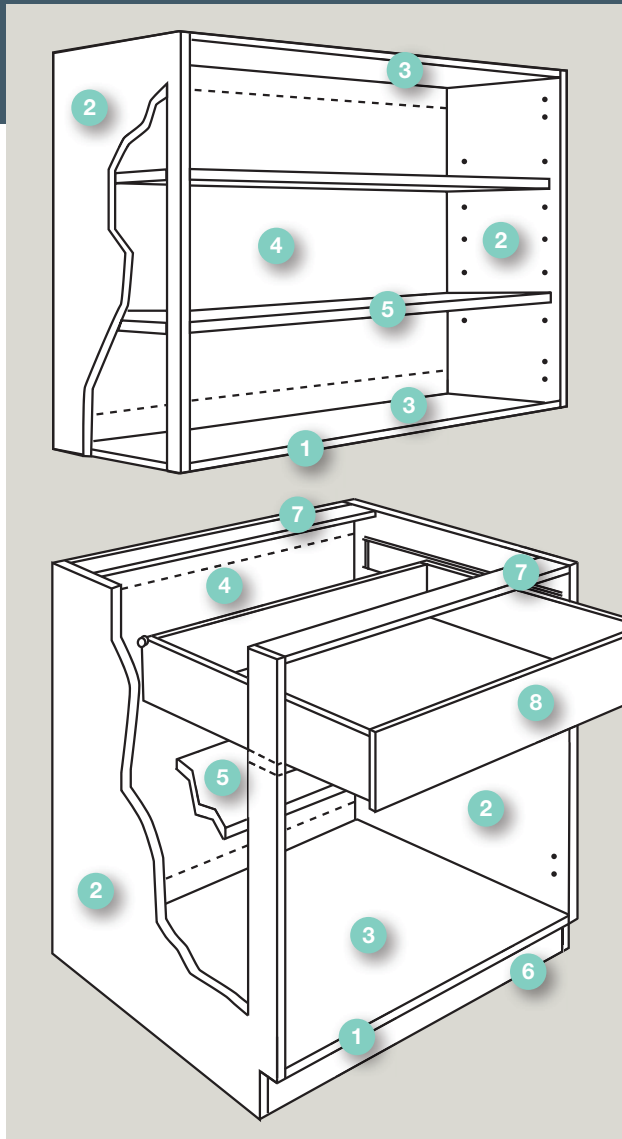
Starlight White Gloss



Fresh Grey Gloss

FULL ACCESS CONSTRUCTION

PROVIDES STRENGTH & DURABILITY



1 BOX CONSTRUCTION

5/8" industrial grade particleboard conforming to ANSI 208.1 and CARB Phase 2, faced with both thermally fused melamine & polyurethane coated overlays (for doors & drawer fronts, & for end panels respectively). Front face of cabinet edgebanded with 0.5mm PVC in door matching colors. Nailers, Stretchers, and Toe Kicks have a 3-dowel application, increasing the lateral strength of the overall cabinet.

2 END PANELS

5/8" industrial grade particleboard conforming to ANSI 208.1 and CARB Phase 2, faced with polyurethane-coated material, matching the color pattern of doors and drawer fronts. End Panels are bore and dowel with glue joinery. Exterior matches door and drawer front finish color. Interior finish is white. End panels are not textured.

3 TOP/BOTTOM PANELS

5/8" industrial grade particleboard conforming to ANSI 208.1 and CARB Phase 2. Exposed panels faced with polyurethane-coated material, matching the color of doors and drawer fronts.

4 BACK PANEL

1/8" fully captured back panel in dado glued and stapled to maintain squareness and structural rigidity. Interior surface faced with thermoplastic polymer top coat.

5 SHELVES

3/4" thick particleboard with polyurethane-coated white laminate on both sides including matching edgeband for front face. Shelves are adjustable in all wall and base cabinets.

6 TOE KICK

5/8" thick x 4-1/2" high industrial grade particleboard captured between end panels. Toe kick is recessed 3-15/16". Decorative toe kick overlays using 1/8" thick polyurethane-coated material.

7 CROSS SUPPORT STRETCHERS

5/8" thick X 4-1/2" deep running the width of the cabinet, with polyurethane-coated white laminate on both sides and matching edgeband for front face. Additional stretcher positioned beneath drawers for base cabinets only.

8 DRAWERS

Standard Metal Drawer: German Engineered, made in the USA. Integrated drawer slide & drawer side with white baked-on epoxy finish. Self-closing feature with 60mm closing range. Built-in drawer front bumpers. Load capacity of 100 lbs. Sides are 1/16" thick metal. Drawer bottoms and backs are 5/8" industrial grade particleboard faced with polyurethane-coated white laminate. Assembly construction is machined & pressed into sides for precision fitment. Drawer base cabinets offer full-width drawers. Dummy fronts are provided for all non-drawer base cabinets.

Optional Soft-Close Drawer Guide Upgrade: Zargen soft-close system – upon contact, soft-close adapters actuate via shock absorbing components.

Double Wall Metal Drawer (Upgrade only): Made in the USA, full extension drawer system with soft-close design. The Double Wall tandem box offers a smooth running mechanism, two dimensional drawer front adjustment, dynamic load capacity of 75lbs. Drawer bottoms and backs are 5/8" industrial grade particleboard faced with polyurethane-coated white laminate. Assembly construction is machined & pressed into sides for precision fit. Drawer base cabinets offer full-width drawers. Dummy fronts are provide for all non-drawer base cabinets. Double wall upgrade is not available on all drawer sizes – see spec book for complete details.

Dovetail Drawer (Upgrade only): Front, back and sides are 5/8" (16mm) thick solid beech hardwood with dovetail construction. Drawer bottoms are nominal 1/4" (6mm) thick multi-ply hardwood birch plywood inserted and stapled into dado in front, back, and sides. Includes high-quality steel, undermount soft-close drawer guides that help reduce drawer slamming. Drawers are full extension, self adjusting in mounting brackets. Built-in stop, self-closing and stay closed features with a 100 lb. rated load capacity.

HINGES

Standard: German engineered, made in the USA. Fully Concealed, 110 degree, 6-way adjustable clip-on with a stamped steel cup and hinge body.

Upgrade: Soft-close that is fully integrated & concealed in the hinge arm. This feature is activated until the door is completely shut.

ADVANTA
CABINETS

AdvantaCabinets.com

Trademark owned by ACProducts, Inc. ©ACPI FRAMELESSBRCHRE 04/18
Advanta Cabinets products are certified by the Kitchen Cabinet Manufacturers Association



Kitchen Cabinet Manufacturers Association
Environmental Stewardship Program
All Products Impact the Environment
For ESP Program Criteria, Visit kcma.org

Advanta Cabinets is part of the Kitchen Cabinet Manufacturers Association (KCMA) and the National Kitchen and Bath Association (NKBA). The Studio Full Access construction series carries the ANSI/KCMA A161.1 quality assurance certification.

An **acpi** brand

THE
NORFOLK
COMPANIES

Since 1934

**Norfolk
Hardware** 
Home Center

**Norfolk
Kitchen**
 **Bath**

**Northeast
Cabinet** 
Countertop Dist.

**Your Trusted Partner For Multi-Family
Kitchen Cabinets & Countertops**

Commercial Sales MA - (617) 313-5050

Commercial Sales NH - (603) 577-5450

TheNorfolkCompanies.com

ADVANTA
CABINETS

AdvantaCabinets.com

Trademark owned by ACProducts, Inc. ©ACPI FRAMELESSBROCHRE 05/17
Advanta Cabinets products are certified by the Kitchen Cabinet Manufacturers Association



Kitchen Cabinet Manufacturers Association
Environmental Stewardship Program
All Products Impact the Environment
For ESP Program Criteria, Visit kcma.org

Advanta Cabinets is part of the Kitchen Cabinet Manufacturers Association (KCMA)
and the National Kitchen and Bath Association (NKBA). The Studio Full Access
construction series carries the ANSI/KCMA A161.1 quality assurance certification.

An **acpi** brand

May 2018